

How to use the PC client CMSClient

1 Installation

1 Download the CMSClient set up .exe file from <http://www.ihomeapp.cn/dl-En.html>

2 Install CMSClient on your PC by double click on the set up .exe file.

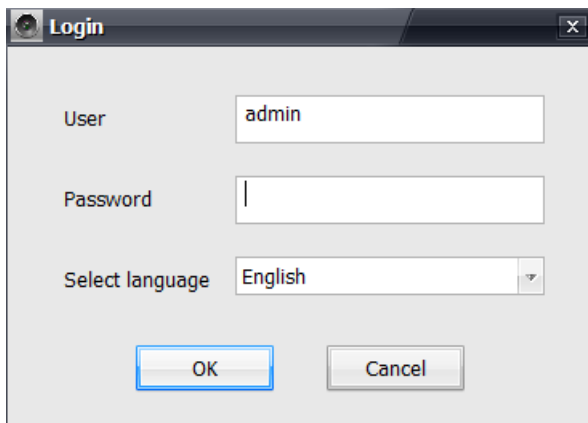
NOTE: You need to have the administrative privilege of your PC to install CMSClient on your PC.

2 Run CMSClient

1 After you have installed CMSClient, the icon  will appear on your desktop. Double click this icon to start CMSClient.

NOTE: If are not the Admin user of the PC, you will be asked to run CMSClient as the Admin user. Therefore you will need to input the Admin user password to start CMSClient.

2 After starting CMSClient, a login dialog will be displayed to you.



NOTE: For some versions of the CMSClient, their default language is NOT English but Chinese. Following the instruction below to change the language to English.

Select English in the list of languages as illustrated below.

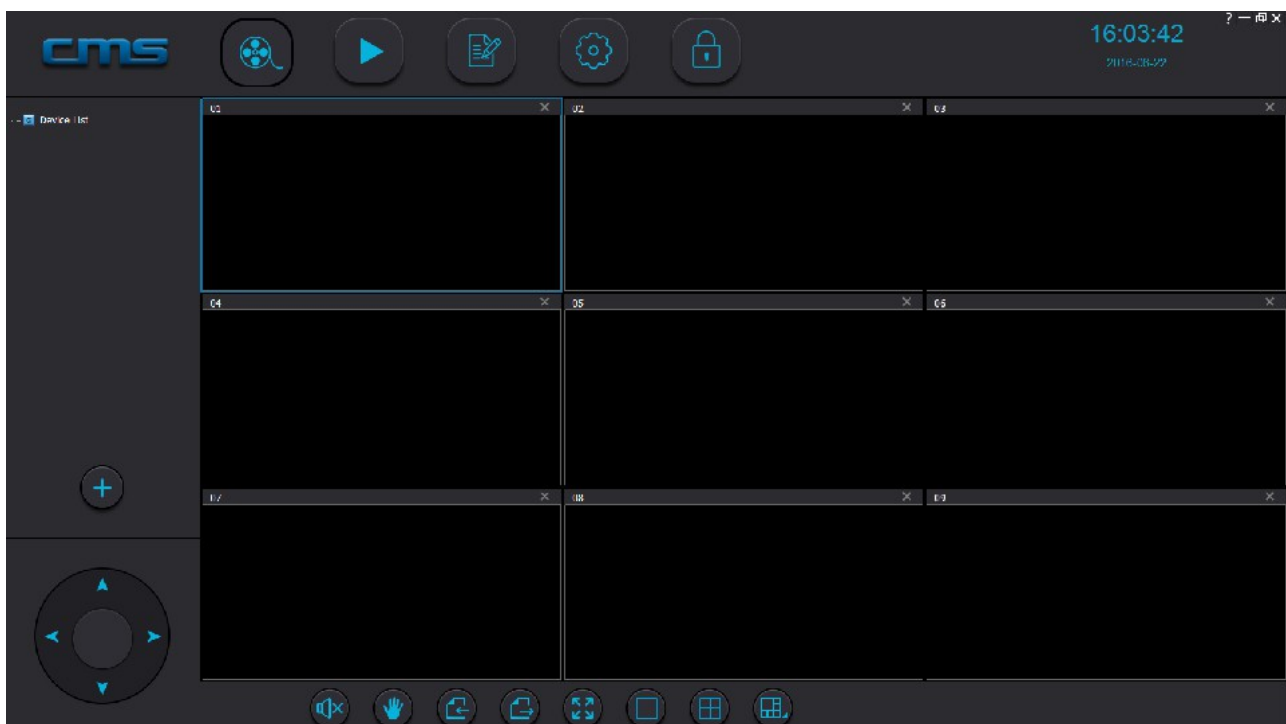


3 Without changing the user name and without typing in any password, login by clicking OK directly.

NOTE: There is no password assigned to the default user admin. After you have logged in, you can change the password of the user admin.

4 After login in the main user interface will appear as below.

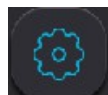
NOTE: depending on the version of the CMSClient you are using, the interface might see a little bit different from the one shown below.



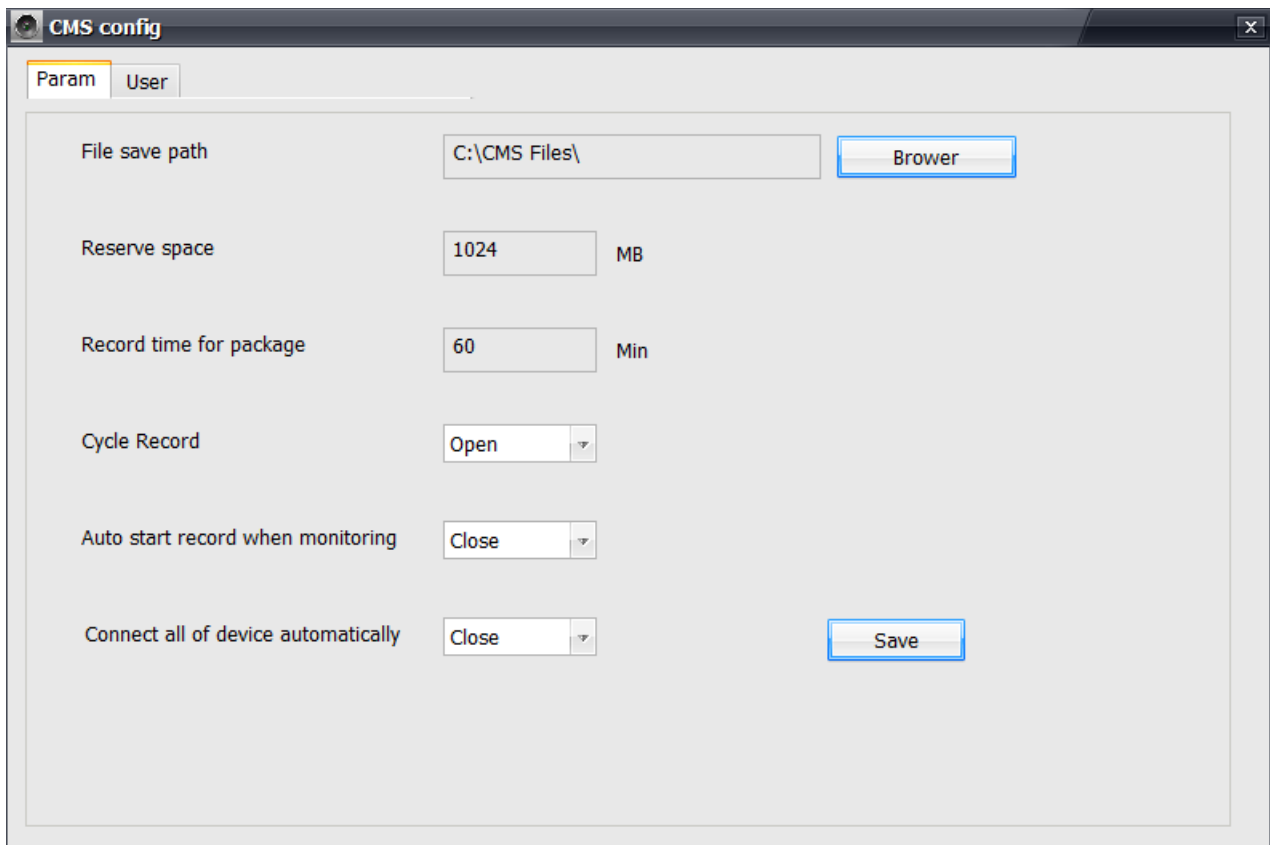
3 Change the admin user password after the first login

You should change the password for the default user admin after you have logged in the first time. To change the password following the steps below.

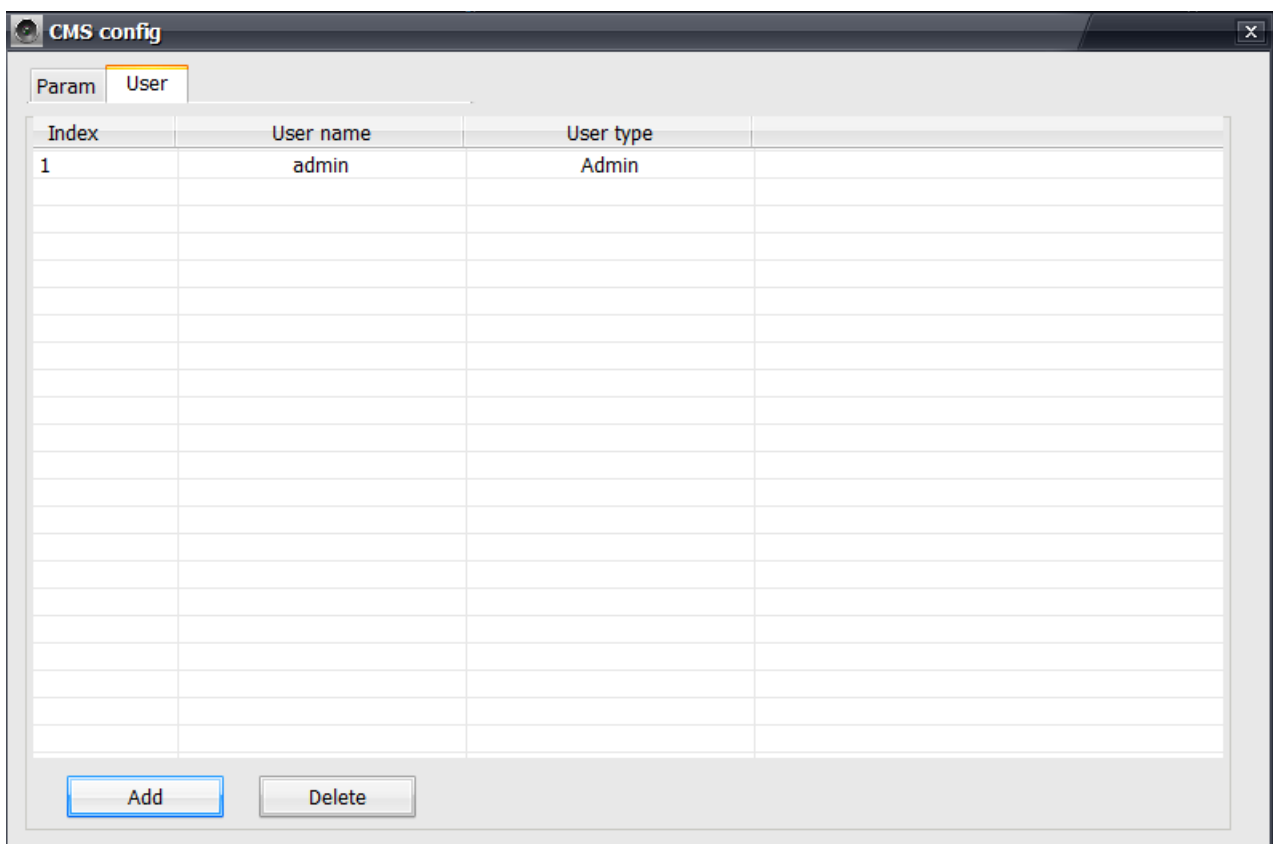
1 Click the Configuration button



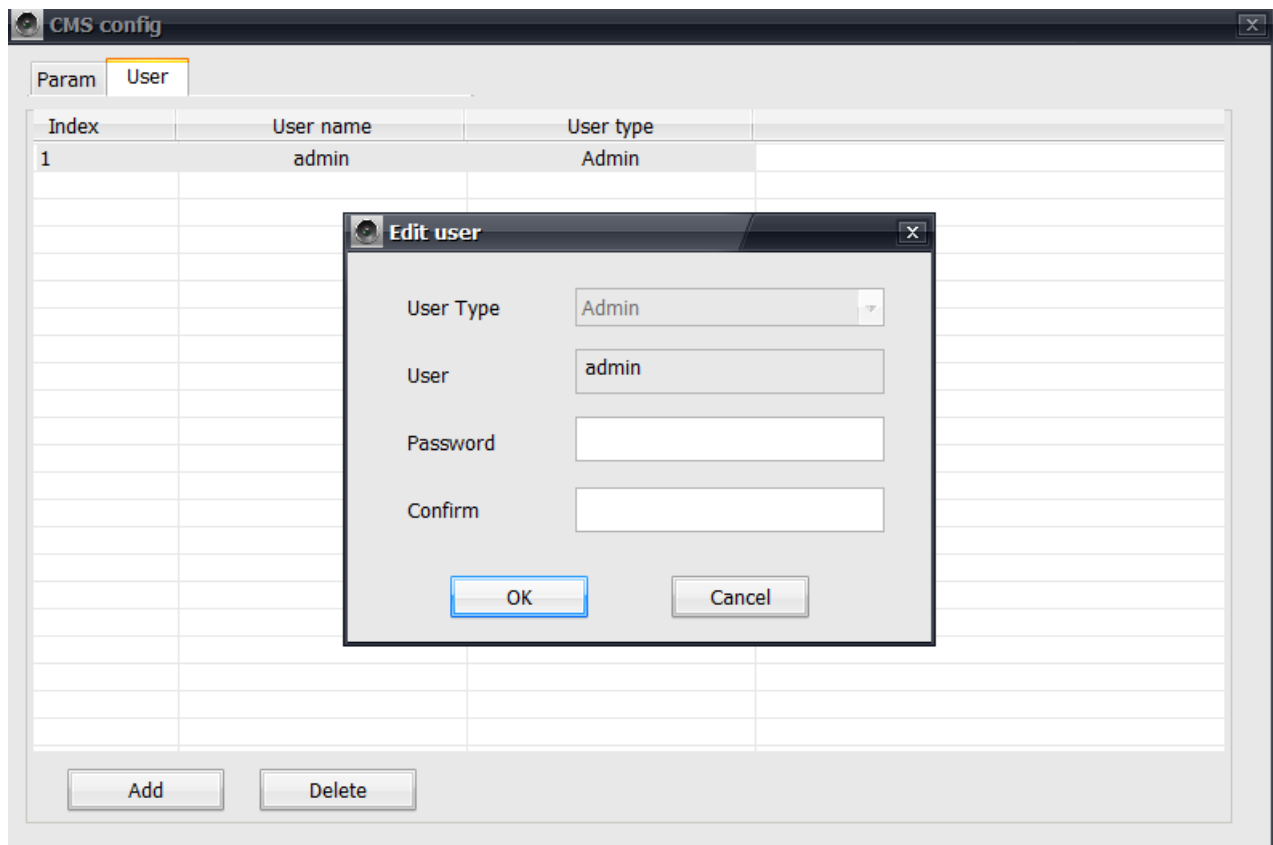
The configuration dialog will appear.



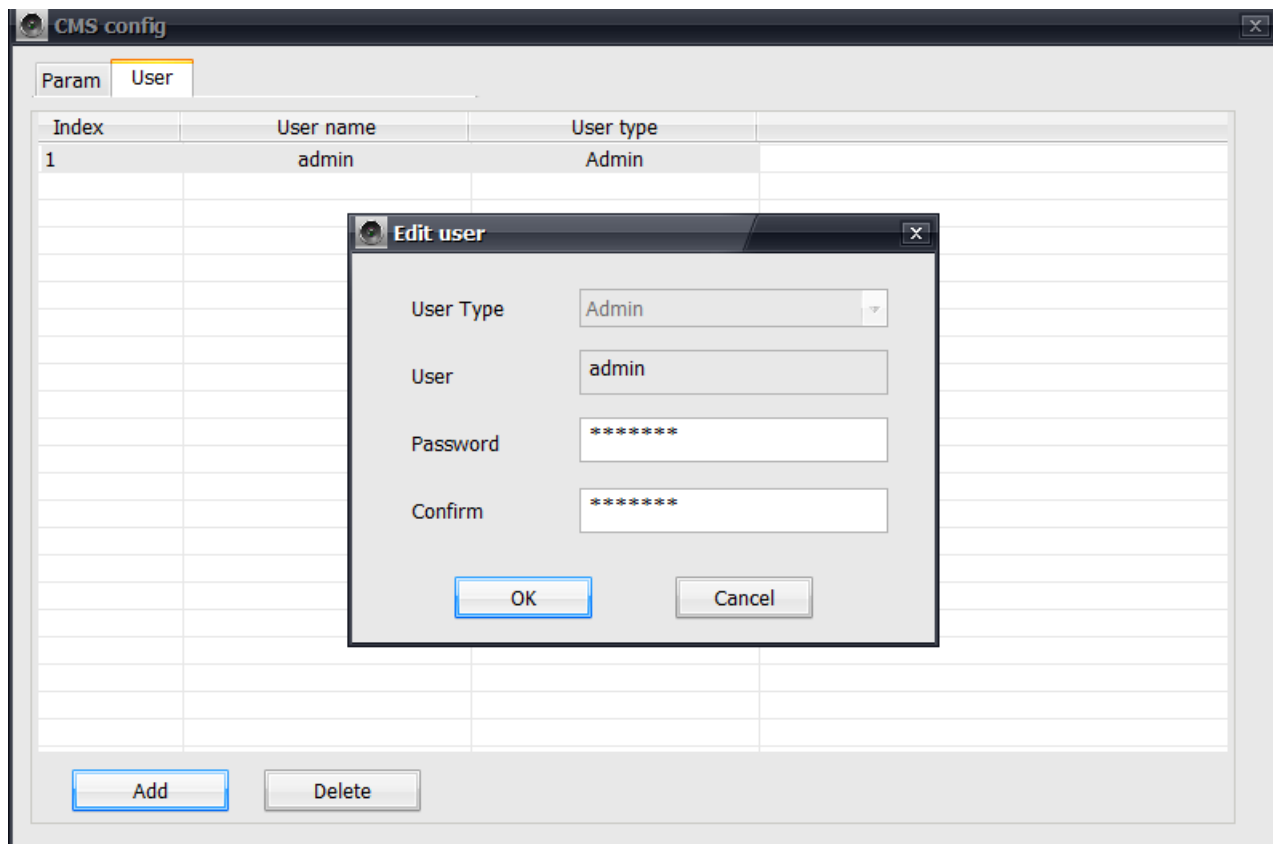
2 Select the User tag. A table of users will appear.



3 Double click the first row which contains the admin user to bring up the Edit User dialog for the admin user.




3 Type in a new password for the admin user and confirm the new password.

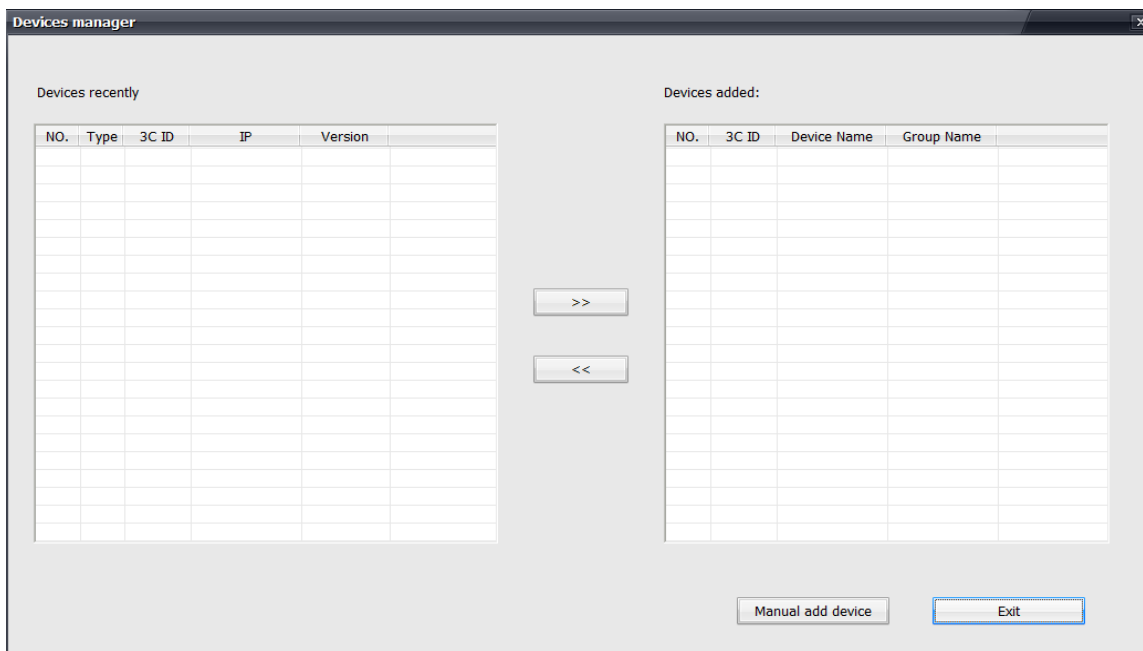


Click OK to accept the new password. The admin user's password has now been changed. Close the Edit User dialog.

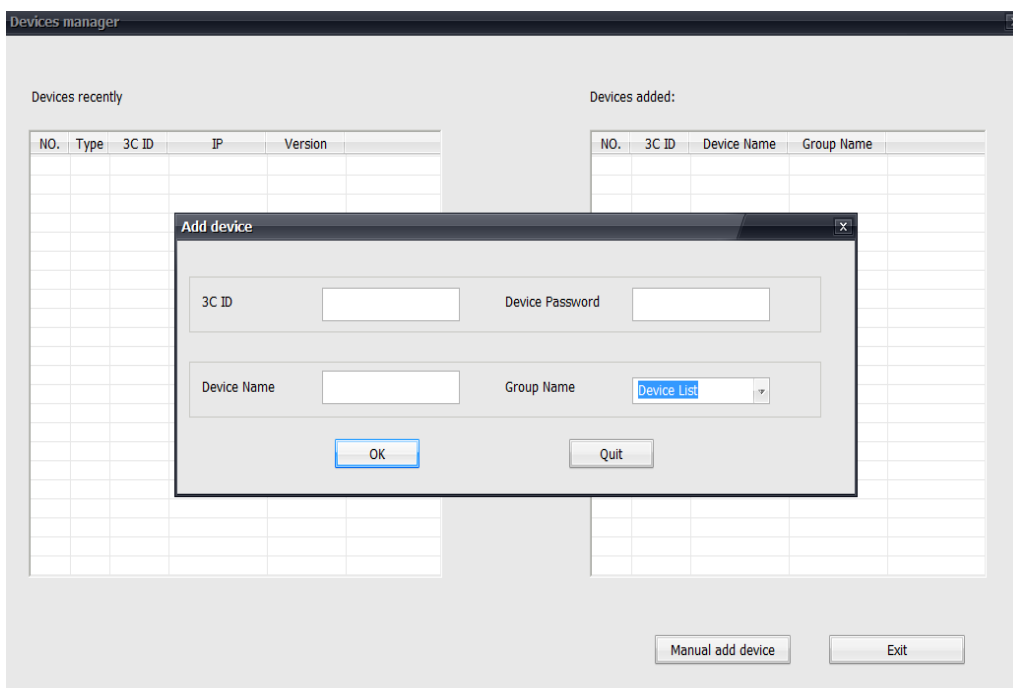
NOTE: You can also add other new users with the Edit User dialog.

4 Add an IP camera into device list

1 Click on the add device button  to bring up the Devices Manager dialog as shown below.

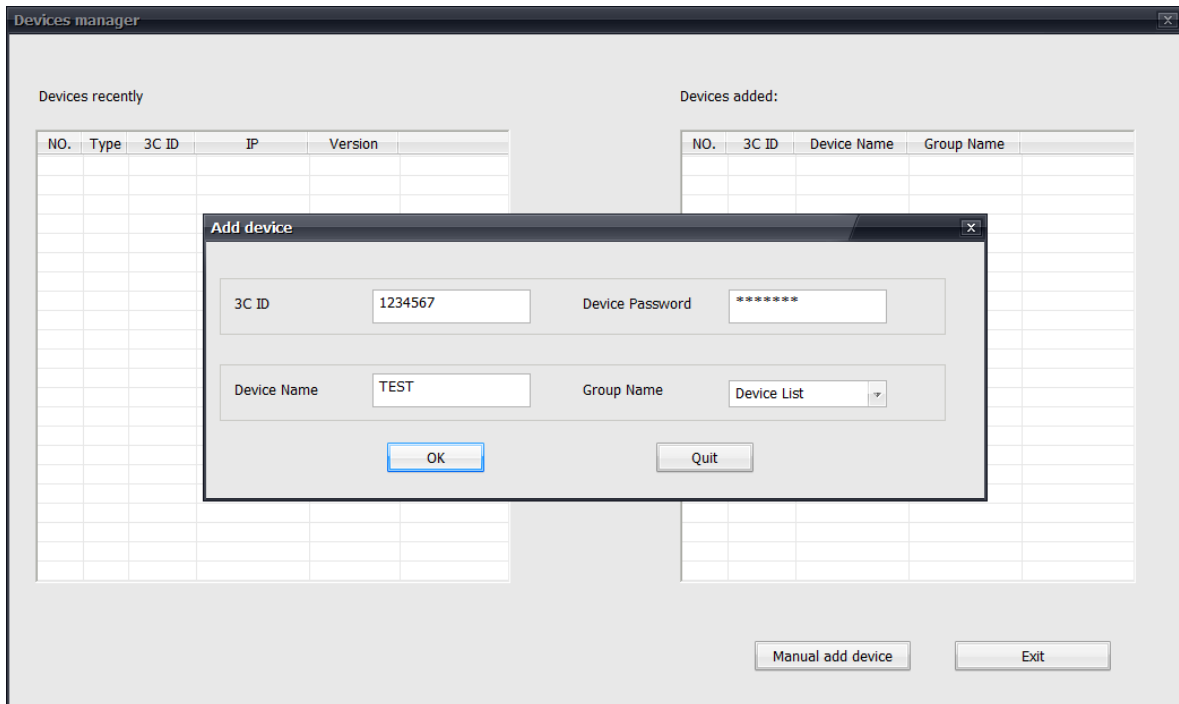


2 click the Manual add device button to bring up the Add device dialog as shown below.



3 Input the required information.

- Input the ID of the camera into the 3C ID field.
- Give the camera a name of your own choice. Input the name into the Device Name field. Choose whatever name you want. For this manual we use the name TEST.
- Input the camera's password into the Device Password field.
- Let Group Name unchanged.

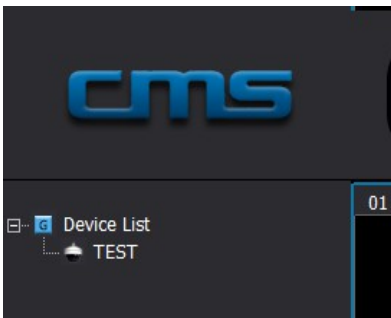


4 After you have input the information, click OK. The camera has been added to the device list. Close the Devices Manager dialog by clicking the Exit button.

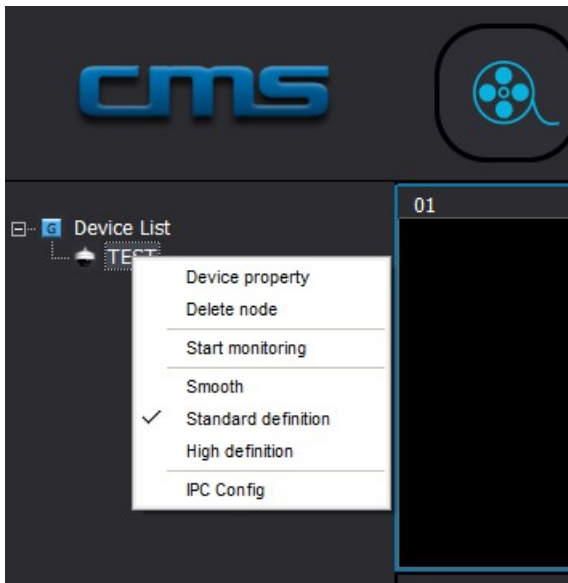
NOTE: you can add many cameras into the device list using the Device Manager.

5 Live monitoring via an IP camera

After adding the camera TEST, it is now in the device list as shown below. To start live monitoring, following the steps below.



1 Right click on the camera TEST to bring up the drop down menu.

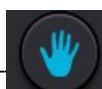


2 Select Start Monitoring to start live monitoring.

NOTE: in the drop down menu, you can choose the definition of the live video. The default definition is standard. You can higher the definition by choosing High Definition or lower the definition by choosing Smooth.

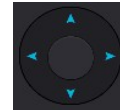


To pan and tilt the camera, click the button



then drag the video while the left mouse key is

pressed. You can also pan and tilt the camera by using the moving wheel



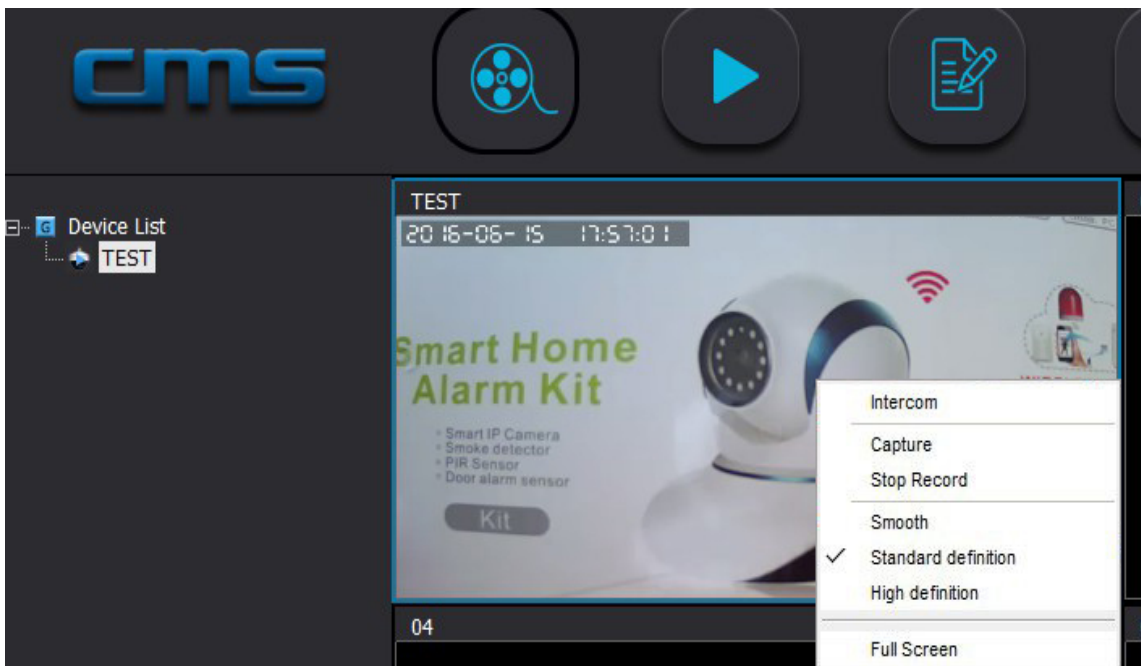
For optimal connection and non interrupting monitoring via PC, we suggest that you always connect your PC to the internet with an Ethernet cable.

3 To stop monitoring, right click the camera TEST and then select Stop monitoring.

6 Recording live video

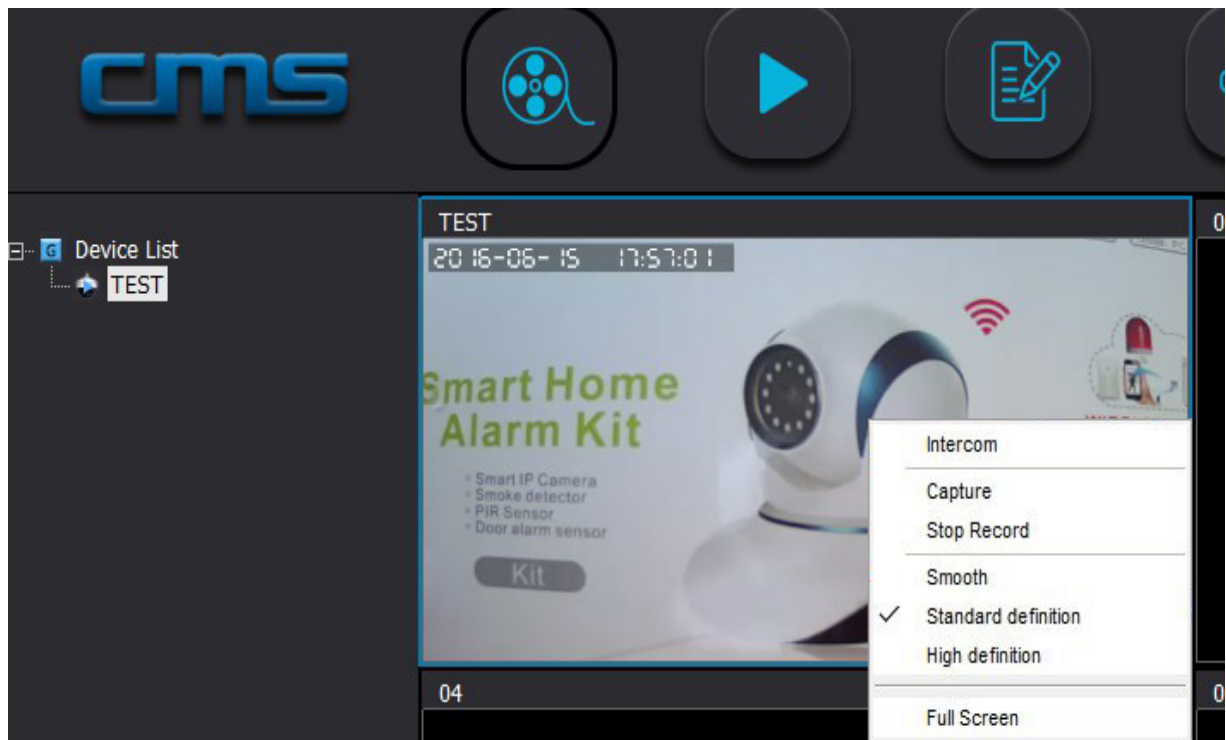
You can record live video via your camera. The recorded files will be stored in your PC.

1 While the camera is monitoring, right click on the monitoring window. A drop down manual will pop up as shown below:



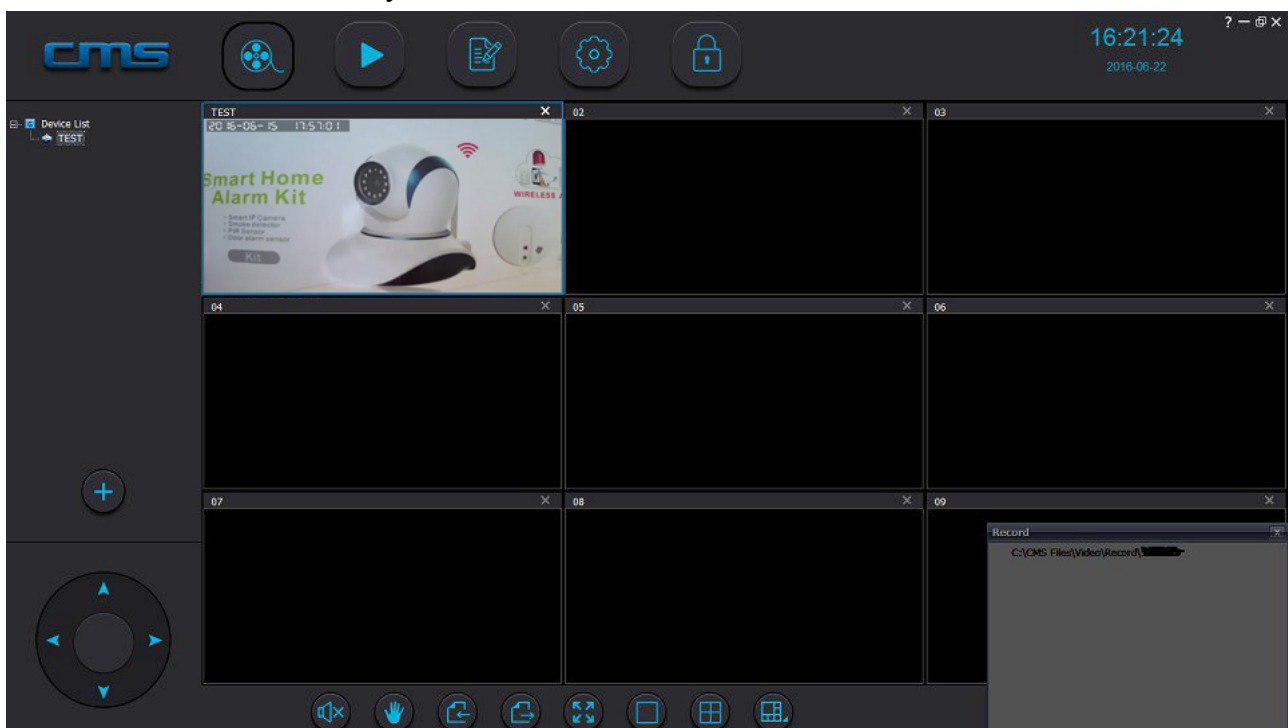
Select “Start Record” to start recording.

2 To Stop recording, right click on the monitoring window again . The drop down manual will pop up again as shown below.



Select “Stop Record” to stop recording.

3 Right after stopping recording, a pop up information dialog will show up at the lower right corner of the user interface to show you the location of the recorded video file.



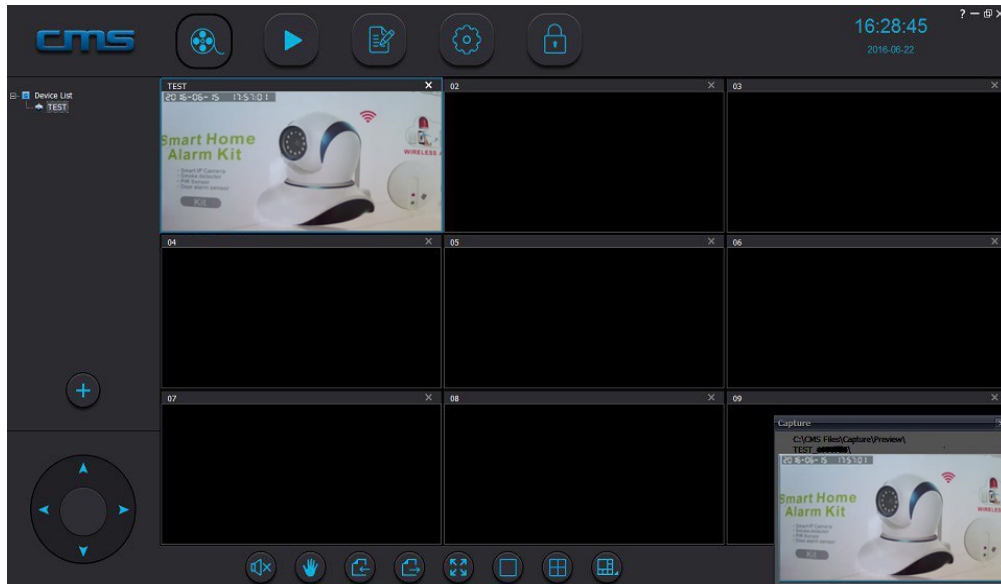
NOTE: the recorded files are stored in your computer under \$DRIVE\$/CMS Files/Video/Record/\$CAMERA-ID\$

\$DRIVE\$ is the home drive such as C: or G: etc. in which CMS is installed. \$CAMERA-ID\$ is the ID of the camera.

6 Take a live picture

You can take a live picture from a camera. Right click on the monitoring window, the pop up menu will show up, select “Capture” to take a live picture.

After taking a live picture, a pop up dialog will show up at the lower right corner of the user interface to show you the taken picture and the store location of the picture.



7 Talk and listen to the camera

The camera supports two way audio. You can talk and listen to the camera.

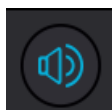
To talk to the camera, right click on the monitoring window and select “Intercom”, You can now talk to the camera.

To listen to the camera, click on the speaker button



The speaker button will turn into the

active view



Now you can listen to the camera.